

Pinaco Fire Alarm

Fire Alarm Control Panel - PSB Approved

The GST200M 2 Loops Addressable Fire Alarm Panel is modular in construction, and designed for ease in installation. The Panel provides high quality solution at exceptional value. By utilizing advanced intelligent protocol, the system is compatible with the complete range of our addressable devices. The Panel is manufactured in compliance to EN54 Parts 2 and 4.

The programming facilities enables advanced and complex cause and effects to be programmed with ease, including phased and cascade evacuation scenarios.

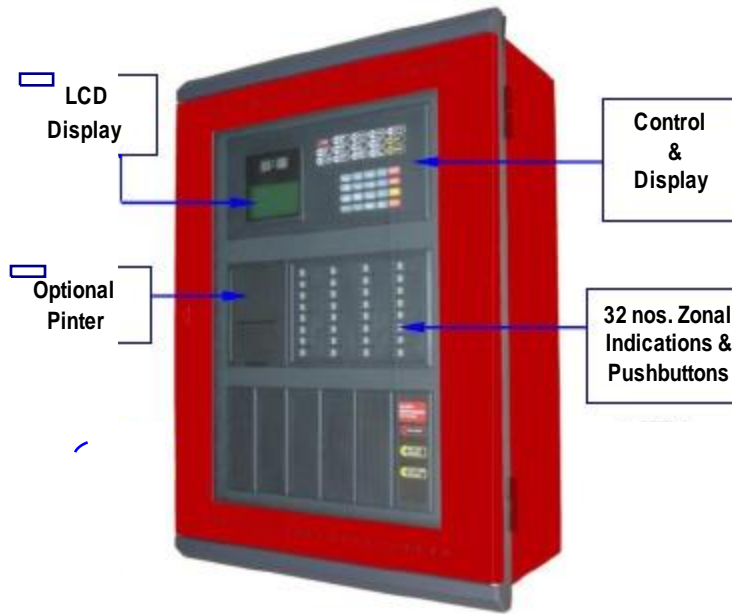
The Zones indication and control facilities allow operator to manually intervene, with evacuation and control of each zone including control of all plant equipment under an alarm condition.

The System is ideal for many applications such as Bank, Shop, Telecommunication, Industrial and Commercial Facilities.

The Panel can be networked with up to 32 Panels, making this the perfect solution for large decentralized System such as Shopping Centre, Industrial Complex, etc...

Features and Benefits:-

- ❖ LPCB Approved to EN54 Parts 2 & 4 : 1998
- ❖ 2 Loops Capacity
- ❖ Up to 477 Addressable Devices per Panel
- ❖ Built-in Clock & LCD Display
- ❖ 32 Zonal Indications & Pushbuttons
- ❖ Net-workable
- ❖ Programmable from PC
- ❖ RS485 Repeater Output (Max. 64 Repeaters)
- ❖ User friendly Programming Software
- ❖ Optional Colour Graphic interfacing
- ❖ Optional Control Switches may be added
- ❖ Optional Built-in Printer



Technical Specifications: -

Mains Input	Voltage : 230VAC 50Hz Current : 0.5A
Operating Voltage	24 VDC Nominal (21-27 VDC)
Standby Battery	2 x 12V 18AH Charging Voltage : Max. 27.3V ±0.3V Charging Current : Max. 1.1A ±0.1A
Sounder Output	Voltage : 21 to 27VDC Current : 0.5A EOL Resistor : 4.7KΩ
Alarm Relay Output	Volt-Free changeover 1.0A @ 24 VDC NC, COM, NO
Common Fault Relay Output	Volt-Free changeover 1.0A @ 24 VDC NC, COM, NO
Fuse Ratings	Mains : 5A Battery : 5A Sounder Output : 2A Alarm Output : 2A FPE Output : 2A
LCD Display	Size : 65mm (W) x 35mm (H) 18 Characters x 8 Lines
Operating Environment	Temperature : 0 to 40°C Relative Humidity : 95%
Dimension (mm)	420(W) x 580(H) x 202(D)
Weight	Approx. 15 kg (Exclude Battery)